

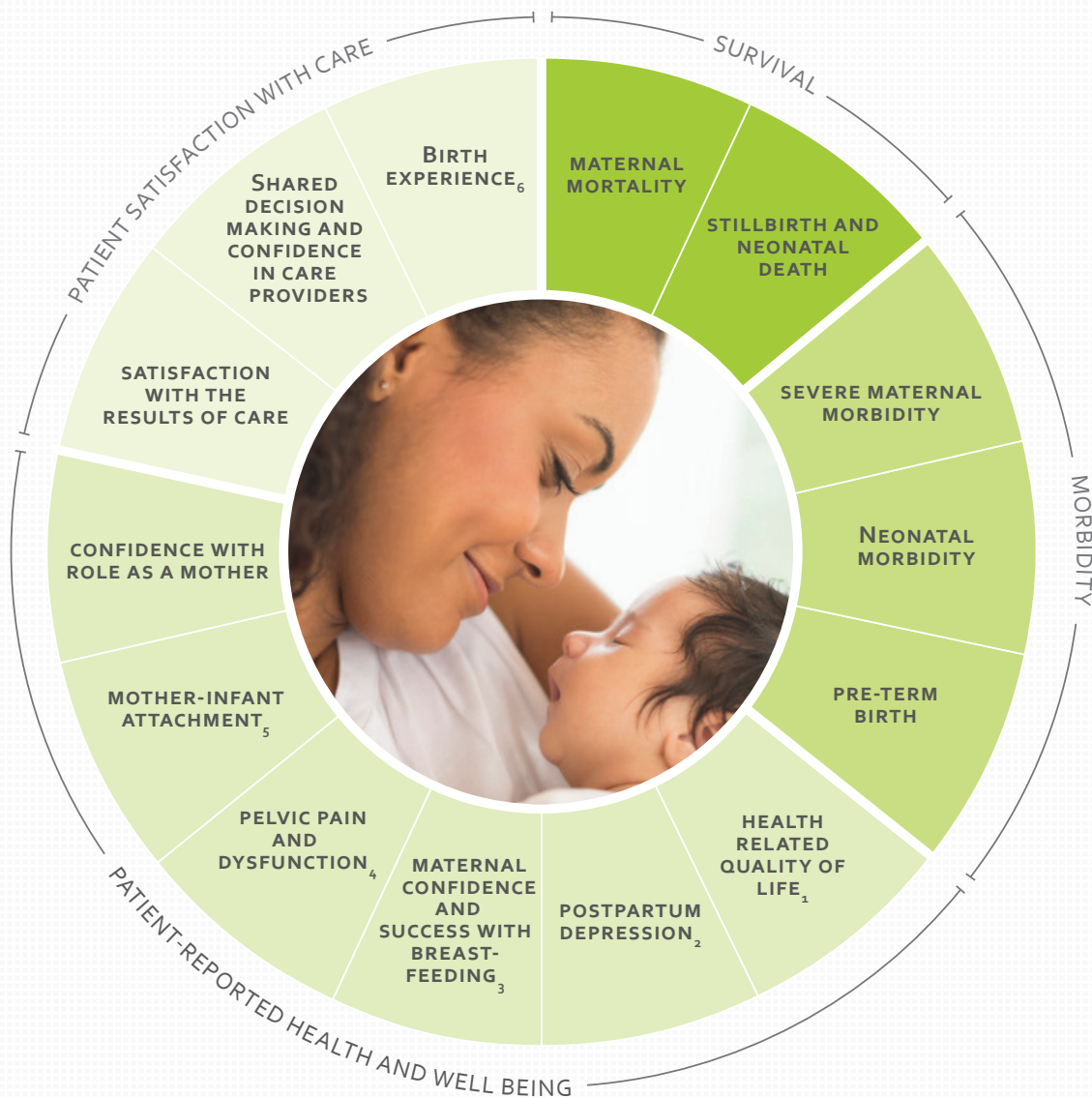
ICHOM Standard Set for

PREGNANCY & CHILDBIRTH

Conditions covered

Types: Pregnancy | Labor and delivery | Up to six months postpartum

For a complete overview of the ICHOM Standard Set, including definitions for each measure, time points for collection, and associated risk factors, visit <http://www.ichom.org/medical-conditions/pregnancy-and-childbirth/>



Details

- 1 Tracked via the PROMIS-10
- 2 Evaluated with the PHQ-2, optional follow-up with the EPDS
- 3 Option to track via the BSES-SF
- 4 Tracked via the ICIQ-SF and Wexner, Wexner and the PROMIS SFFAC102
- 5 Tracked via the MIBs
- 6 Tracked via the BSS-R



ICHOM
PREGNANCY &
CHILDBIRTH

Revised: April 5th, 2016

ICHOM Standard Set

CONTRIBUTORS

For more information about the process of developing a Standard Set, visit ichom.org/how-we-work/

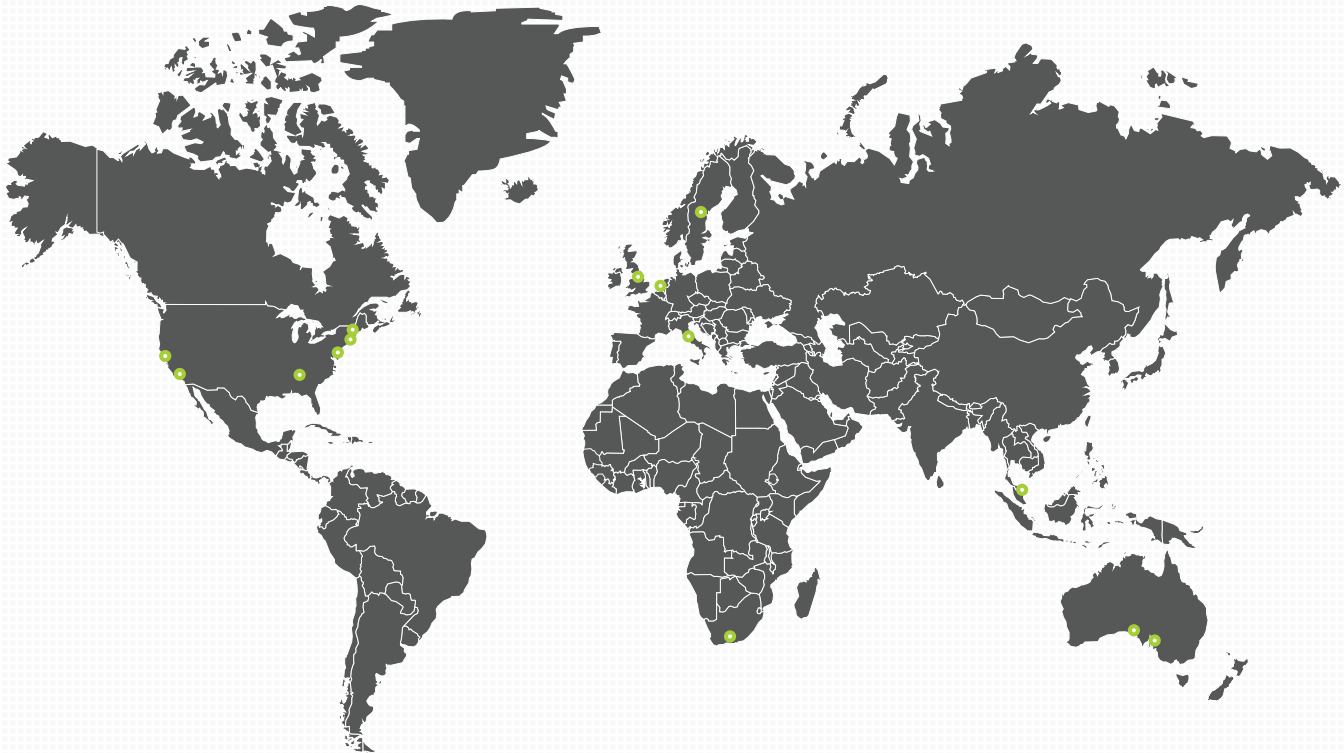
The Sponsors



ACI NSW Agency
for Clinical
Innovation



The Working Group



Australia

Tessa Kowaliv* | South Australian Reform Association Inc.
Rod Petersen | Women's and Babies' Division, WCHN

Italy

Anna Marie Speciale | American College of Nurse Midwives

Malaysia

J Ravichandran R Jeganathan | National Obstetric Registry
Shamala Devi Karalasingam | National Obstetric Registry

Netherlands

Gouke Bonsel | Erasmus Medical Center
Arie Franx | Utrecht Medical Center
Floris Groendendaal | Utrecht Medical Center
Irwin Reiss | Erasmus Medical Center
Marije de Ruiter | Utrecht Medical Center

South Africa

Stefan Gebhardt | Tygerberg Hospital

Sweden

Isis Amer-Wahlin | Sveus, Stockholm County Council, Karolinska Institute

United Kingdom

Mathew Coleman | University Hospital Southampton, NHS
James Duffy | Crown Initiative

United States

Allyson Brooks | Hoag Memorial Hospital
Tracy Flanagan | Kaiser Permanente
Meridith Greene* | Massachusetts General Hospital
Elliott Main | Sutter Pacific Medical Foundation, CMQCC
Marlin Mills | Hoag Memorial Hospital
Malini Nijagal | Boston Medical Center

Michelle Owens | University of Mississippi Medical Center, ACOG
Carol Sakala | National Partnership for Women & Families
Rachel Thompson | The Dartmouth Institute for Health Policy and Clinical Practice

*Patient representative